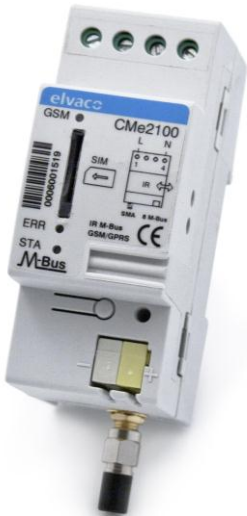


CMe Range – CMe2100
M-Bus Master
GSM/GPRS
DIN-mounting



CMe2100 is a flexible and cost-effective GSM/GPRS M-Bus master. It is ready to use and is compatible with any M-Bus meter following the M-Bus standard protocol. CMe2100 uses a standard protocol for fast and easy integration. CMe2100 is configurable by SMS and can receive remote software updates. Its flexible and versatile design makes it simply the most powerful GSM/GPRS M-Bus master on the market.

READY TO USE

CMe2100 is a ready to use DIN-mounted GSM/GPRS M-Bus master with no configuration required in the field. The usability reduces both installation costs and the risk of handling errors. CMe2100 delivers immediate information on the installation status and starts logging meter data directly after power up.

STANDARD OPEN PROTOCOLS

The standard open protocol allows fast integration into existing billing and reporting systems. Transparent M-Bus communication with GSM and TCP works with any software supporting the M-Bus standard. CMe2100 can send meter values using FTP, http and e-mail. The e-mail report feature prevents firewall and IT-structure implementation problems.

FLEXIBLE

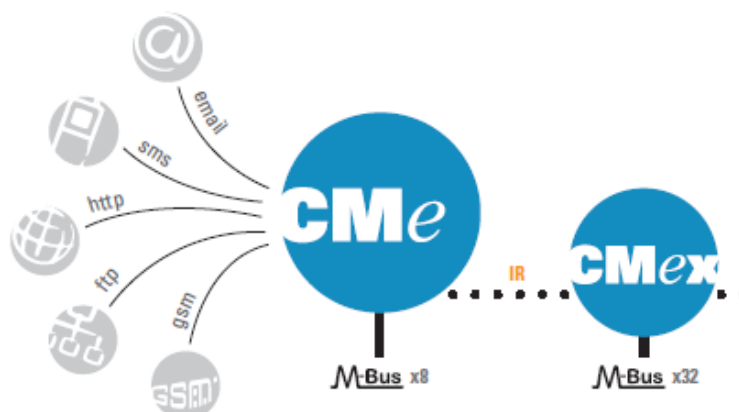
The flexible design with the IR optical port makes it possible to add expansion modules on demand. For example, add a CMe10 range M-Bus extender to connect up to 256 extra meters. New expansion modules are constantly developed to meet new market demands.

COST EFFECTIVE

CMe2100 provides some of the most cost-effective solutions for DIN-mounted meter installations. The quality and the number of options available serve to minimize the overall cost of the product over the course of its use.

FUTURE PROOF

CMe2100 is built on SUN Java™ platform technology, a worldwide standard. Core platform and libraries are designed and tested by leading software companies. Updates and patches are performed remotely, preventing unnecessary service calls or visits.



CMe Range – CMe2100
M-Bus Master
GSM/GPRS
DIN-mounting

Technical Specifications

Mechanical Specifications

Casing material	Polyamide
Protection class	IP20
Dimensions	100 x 65 x 36 mm
Weight	120 g
M-Bus connection	Pin terminal solid wire 0.6-0.8 Φ mm
Power supply connection	Screw terminal; 0-2.5 mm ² cable; tightening torque: 0.5 Nm

Electrical Specifications

Nominal voltage	100-240 VAC
Voltage range	-10% to +10% of nominal voltage
Frequency	50/60 Hz
Power consumption (max.)	< 2.5 W
Power consumption (nom.)	< 1 W
Installation category	CAT 4

GSM/GPRS

GPRS class	Up to 12
Band	850/900/1800/1900 MHz

Environment

Operating temperature range	-20 °C to +55 °C
Storage temperature range	-40 °C to +85 °C
Operating humidity (max.)	80% RH temperatures up to 31 °C, decreasing linearly to 50% RH at 40 °C
Pollution	2
Operating altitude	0-2000 m
Use	Indoor use only. IP67 enclosure is available for outdoor use.

User Interface

Green led	Power
Red led	Error
Yellow Led	GSM status
Push button	Reset

M-Bus

Standard	EN 13757 full M-Bus protocol
Baud rate	300 and 2400 Bit/s
Transparent M-Bus	Listening server on TCP and GSM data
Max. connected M-Bus meters	8 (can be extended with the CMeX10 range)
Max. cable length	1000 m
IR interface	Yes
Pass Through	No
Compatibility	M-Bus meters, CMeX range products

General Specifications

Data storage	~ 1,4 for meter data and custom report configuration
Backup real time clock	12 hrs
Real time clock accuracy	< 2 s/day
Script engine	Intelligent script engine for active content generation
Firmware update	With GSM/GPRS/HTTP
Software update	With GSM/GPRS/HTTP

Integration

Transparent M-Bus static IP	TCP
Transparent M-Bus	GSM CSD/raw M-Bus data
E-mail	SMTP
FTP	Client FTP standard
HTTP	Client standard HTTP and HTTPS, POST & GET
Configuration	SMS, HTTP, FTP, GSM CSD, Telnet

Approvals

EMC	EN 61000-6-2, EN 61000-6-3
Safety	EN 61010-1, CAT 4

Subject to technical change without prior notice.